



H-AND-S™

A unique hand-sign typeface.

Designed by Studio AND

version 1.1 · March 1, 2024



H-AND-S Full | Uppercase Keyboard Map



H-AND-S Full | Lowercase Keyboard Map



H-AND-S Empty | Uppercase Keyboard Map



H-AND-S Empty | Lowercase Keyboard Map



Story

In his travels around the world, Jean-Benoît Lévy collected specimens of hand-signage that he discovered in various packaging, signage, and instruction manuals. More than a decade of research and design on the subject of hand signs resulted in this award-winning* iconographical typeface and the publication: “Handbook: A book of handsigns” The name “H-AND-S” blends the subject with the name of Lévy’s San Francisco based studio, AND, where it was created.

We are all individually different but we have one thing in common: each of us regularly comes in contact with those modern hieroglyphs, which are the little hand sign codes prevalent in our daily lives. Even if particular signs mean something different from one culture to another, there remains a common hand-sign language. All around us these signs are used like a global language because they are meant to be understood by all of us. Each time we use a tool, open a container, or play rock-paper-scissors we are utilizing the language of hand signs. Worldwide, people make these easily understood signs we so often rely on for information, for help, or for directions. We take these signs for granted so are we truly aware of them?

Collecting, redrawing, ordering, unifying. The simple graphical exercise of collecting those signs became step-by-step, a

complex signage program. The choice of those signs is based on daily movements and on universal hand codes. Logically, this typeface starts with the “Manual Alphabet for the Deaf” and is mapped to the upper and lowercase keys of the QWERTY keyboard. H-AND-S is the first time so many hand signs were assembled and redrawn in one consistent style. The language of hand signs is universal. It belongs to no one in particular and to all of us in general. •!•

*The H-AND-S typeface received a Grand Prize in the 2024 United Designs Alliance Annual International Design Competition for Signs, Systems, and Letterform Marks.

Design & Development: Studio AND
Concept & Direction: Jean-Benoît Lévy

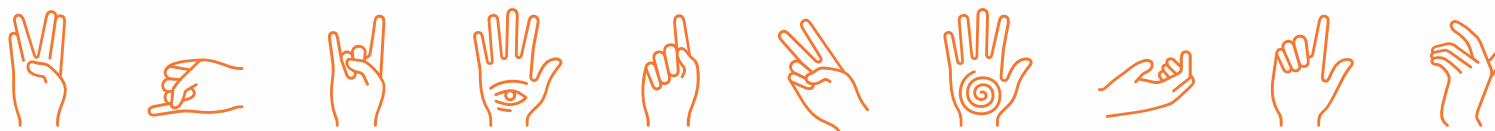
The H-AND-S family has 2 styles: Empty and Full

Formats Available: OpenType (otf), Truetype (ttf), and Web-fonts (woff2)

Licenses for Desktop, Webfonts, and App Fonts are available for purchase at DelveFonts.com. Contact Delve Fonts for additional licensing options like: Broadcast, ePubs, and more.

Glyphs

48PT EMPTY



Glyphs

48PT EMPTY



Glyphs

48PT FULL

48PT FULL



Glyphs

48PT FULL



H-AND-S



EMAIL:
support@delfefonts.com

PHONE:
1.510.883.3358

MAILING ADDRESS:
Delve Fonts LLC
2717 Santa Clara Ave.
Alameda, CA 94501

H-AND-S is a trademark of Studio AND. Tome and Delve Fonts are trademarks of Delve Fonts LLC. All other trademarks or copyrights mentioned are the property of their respective owners.

Copyright © 2024, Delve Fonts LLC. All Rights Reserved.

H-AND-S