

1403 VINTAGE MONO™

A PRACTICAL MONOSPACED TYPEFACE.

Designed by Jeff Kellem

Expansion Update v2 • January 30, 2016

CÔNG NGHỆ IN MỚI

THE COMPUTER HISTORY MUSEUM

ΟΛΑ ΤΑ ΠΑΛΙΑ ΕΙΝΑΙ ΚΑΙΝΟΥΡΓΙΑ ΞΑΝΑ

BIG EAR RADIO TELESCOPE

“THE WOW! SIGNAL” AUGUST 15, 1977

נִי יָר טוֹפֵס רֵצִיק

HIGH-SPEED SERVOMECHANISMS

COMPUTING DEVICE

TREYSTU EN STADFFESTU

KRAFTWERK “AUTOBAHN” 1974

ASCII ART & GRAYSCALE EQUIVALENTS

ΦΟΤΟΓΡΑΦΙΪ ΤΑ ΔΟΚΥΜΕΝΤΑΪΑ

I WANT TO BELIEVE

HALT AND CATCH FIRE: _

STORY

1403 Vintage Mono was inspired by the IBM 1403 mainframe line printer from the 1960s. The idea to create the typeface was sparked by Mark VandeWettering wondering aloud if a digital font existed reminiscent of that particular printer.

Jeff Kelleem began his research for the project but printed samples were minimal, requiring a bit of guesswork for some shapes. He started with the basic 48 glyphs (26 letters, 10 digits, and 12 symbols) used on the 1403 'A' chain. Mixing between the 'A' and 'H' chains, a few more characters were discovered (e.g.- a square lozenge symbol) and added to the font. Kelleem was also able to source a several more glyphs from chains that had been modified to support Icelandic text.

In the early stages of design, the weight was heavier, slightly wider overall, and spacing was tighter. With rigorous proofing and testing of each iteration, Kelleem made critical adjustments. What would become "1403 Vintage Mono Limited." now had the original 52 characters present in the printer, along with the basic complement of Latin characters and small capitals in place of lowercase characters. The completed font supports Unicode Latin-1 and the Adobe Latin 2 set.

The "Pro" version of 1403 Vintage Mono has a much larger

repertoire of glyphs — clocking in at 323 Latin alphabet based languages supported, including: Vietnamese, Catalan, Czech, and Polish. In addition, the Cyrillic, Greek, and Hebrew scripts are present, supporting dozens more languages.

Use 1403 Vintage Mono at display sizes on book and album covers, film titles, and elsewhere to signal trust and accuracy. At text sizes its monospaced quality makes it easy to set text in columns and grids and has an appearance of authenticity.

Design & Production: Jeff Kelleem
Special thanks to: David Jonathan Ross and Delve Withrington

1403 Vintage Mono has 2 variants: Pro and Limited

Formats Available: OpenType (OTF), Webfonts (WOFF, WOFF2), and Truetype (TTF)

Licenses for Desktop, Webfonts, and App Fonts are available for purchase at DelveFonts.com. Contact Delve Fonts for additional licensing options such as ePub/eBooks, Enterprise, Servers, OEM, Broadcast, Large Volume Printing, and NFTs.

FEATURES

LOCALIZED FORMS

ÀÈĆŞÍЈД → ÀÈĆŞÍЈД

HISTORICAL FORMS

ÅİÖıи®\$ → ÅİÖıи®\$

SUPERSCRIP

ABC+123 → A B C + 1 2 3

SUBSCRIPT

ABC+123 → A B C + 1 2 3

STYLISTIC ALTERNATES

Υ π 4 ϩ N^º ϕ → Υ π 4 ϩ N^º ϕ

ALTERNATIVE FRACTIONS (AFRC & SS04)

1/2 2/3 1/4 2/5 4/7 7/8 → 1/2 2/3 1/4 2/5 4/7 7/8

WORLDWIDE CURRENCY SYMBOLS

฿¢\$₪₴€₰₱₲₳₴₵₶₷₸₹

MATH SYMBOLS

∫∫∫∴≠∇∴.₄ ≐ ∅ − √ ∓ □ ▽ ∑ ∏

ARROWS

↑ ↗ → ↘ ↓ ↙ ← ↖ ↔ ↕ → ⇌ ⇔

SYMBOLS & DINGBATS

☞ ⌚ ⚡ 🎯 🎲 ⏪ ⏩ ♠ ♣ ♥ ⚓ ♣ ☑ E₀ T

Additional Features Include: Contextual Alternates, Small Capitals, Ordinals, Slashed Zero, Numerators, Denominators, Scientific Inferiors, Standard Ligatures, Case-Sensitive Forms, Stylistic Sets (ss001–ss016)

SCALE

28PT HAMBURGEFONTS HAMBURGEFONTS 012

26PT HAMBURGEFONTS HAMBURGEFONTS 01234

24PT HAMBURGEFONTS HAMBURGEFONTS 01234567

22PT HAMBURGEFONTS HAMBURGEFONTS 0123456789

20PT HAMBURGEFONTS HAMBURGEFONTS 0123456789 &a#\$\$

18PT HAMBURGEFONTS HAMBURGEFONTS 0123456789 &a#\$\$%*({[

16PT HAMBURGEFONTS HAMBURGEFONTS 0123456789 &a#\$\$%*({[!?\·|/

14PT HAMBURGEFONTS HAMBURGEFONTS 0123456789 &a#\$\$%*({[!?\·|/])};;.,

12PT HAMBURGEFONTS HAMBURGEFONTS 0123456789 &a#\$\$%*({[!?\·|/])};;.,-

10PT HAMBURGEFONTS HAMBURGEFONTS 0123456789 &a#\$\$%*({[!?\·|/])};;.,-

8PT HAMBURGEFONTS HAMBURGEFONTS 0123456789 &a#\$\$%*({[!?\·|/])};;.,-

TEXT

14PT • 1403 VINTAGE MONO

THE 1403 CHAIN OR TRAIN CONTAINS 240 CHARACTERS, HOWEVER NUMEROUS DUPLICATIONS ALLOW A LINE TO BE PRINTED IN LESS THAN THE 0.4 SECONDS REQUIRED FOR ONE FULL ROTATION. THE ORIGINAL STANDARD "A" CHAIN CONTAINS 48 DIFFERENT CHARACTERS, REPEATED

10PT • 1403 VINTAGE MONO

THE 1403 CHAIN OR TRAIN CONTAINS 240 CHARACTERS, HOWEVER NUMEROUS DUPLICATIONS ALLOW A LINE TO BE PRINTED IN LESS THAN THE 0.4 SECONDS REQUIRED FOR ONE FULL ROTATION. THE ORIGINAL STANDARD "A" CHAIN CONTAINS 48 DIFFERENT CHARACTERS, REPEATED FIVE TIMES EACH. "A PREFERRED CHARACTER SET" VARIANT USED IN LATER MODELS PRINTS THE

12PT • 1403 VINTAGE MONO

THE 1403 CHAIN OR TRAIN CONTAINS 240 CHARACTERS, HOWEVER NUMEROUS DUPLICATIONS ALLOW A LINE TO BE PRINTED IN LESS THAN THE 0.4 SECONDS REQUIRED FOR ONE FULL ROTATION. THE ORIGINAL STANDARD "A" CHAIN CONTAINS 48 DIFFERENT CHARACTERS, REPEATED FIVE TIMES EACH. "A PREFERRED CHARACTER

8PT • 1403 VINTAGE MONO

THE 1403 CHAIN OR TRAIN CONTAINS 240 CHARACTERS, HOWEVER NUMEROUS DUPLICATIONS ALLOW A LINE TO BE PRINTED IN LESS THAN THE 0.4 SECONDS REQUIRED FOR ONE FULL ROTATION. THE ORIGINAL STANDARD "A" CHAIN CONTAINS 48 DIFFERENT CHARACTERS, REPEATED FIVE TIMES EACH. "A PREFERRED CHARACTER SET" VARIANT USED IN LATER MODELS PRINTS THE SAME 48 CHARACTERS, BUT VARIES THE NUMBER OF APPEARANCES: 10 DIGITS APPEAR EIGHT TIMES EACH, 26 UPPER-CASE LETTERS

LANGUAGE SUPPORT

Abaza, Abua, Acheron, Achinese, Acholi, Achuar-Shiwiar, Adyge, Afar, Afrikaans, Aghul, Aguaruna, Ahtna, Alekano, Aleut, Alonquin, Amahuaca, Amarakaeri, Amis, Anaang, Andaandi (Dongolawi), Anuta, Aragonese, Arbëreshë Albanian, Archi, Asháninka, Ashéninka Perené, Asturian, Atayal, Avaric, Balinese, Balkan Romani, Banjar, Bari, Bashkir, Basque, Batak Dairi, Batak Karo, Batak Mandailing, Batak Simalungun, Batak Toba, Belarussian, Bemba (Zambia), Bena (Tanzania), Bezhta, Biali, Bikol, Bini, Bislama, Borana-Arsi-Guji Oromo, Bosnian, Breton, Budukh, Buginese, Bulgarian, Candoshi-Shapra, Caquinte, Caribbean Hindustani, Cashibo-Cacataibo, Cashinahua, Catalan, Cebuano, Central Aymara, Central Kurdish, Central Nahuatl, Central Siberian Yupik, Chachi, Chamalal, Chamorro, Chavacano, Chechen, Chiga, Chiltepec Chinantec, Chinese Buriat, Chokwe, Chuukese, Chuvash, Cimbrian, Cofán, Cook Islands Māori, Cornish, Corsican, Creek, Crimean Tatar, Crimean Tatar, Croatian, Czech, Danish, Dargwa, Dehu, Dido, Dimli, Dungan, Dutch, Eastern Arrernte, Eastern Mari, Eastern Oromo, Efik, English, Erzya, Faroese, Fijian, Filipino, Finnish, French, Friulian, Gagauz, Galician, Ganda, Garifuna, German, Gheg Albanian, Gilbertese, Gooniyandi, Gourmanchéma, Greek (Pontic), Greek Modern, Guadeloupean Creole French, Gusii, Gwich'in, Hän, Haitian, Halh Mongolian, Hani, Hawaiian, Hebrew, Hiligaynon, Hopi, Huastec, Hungarian, Icelandic, Igbo, Iloko, Inari Sami, Indonesian, Ingush, Irish, Istro Romanian, Italian, Ixcatlán Mazatec, Jamaican Creole English, Japanese, Javanese, Jola-Fonyi, Judeo-Tat, K'iche', Kölsch, Kabardian, Kabuverdianu, Kaingang,

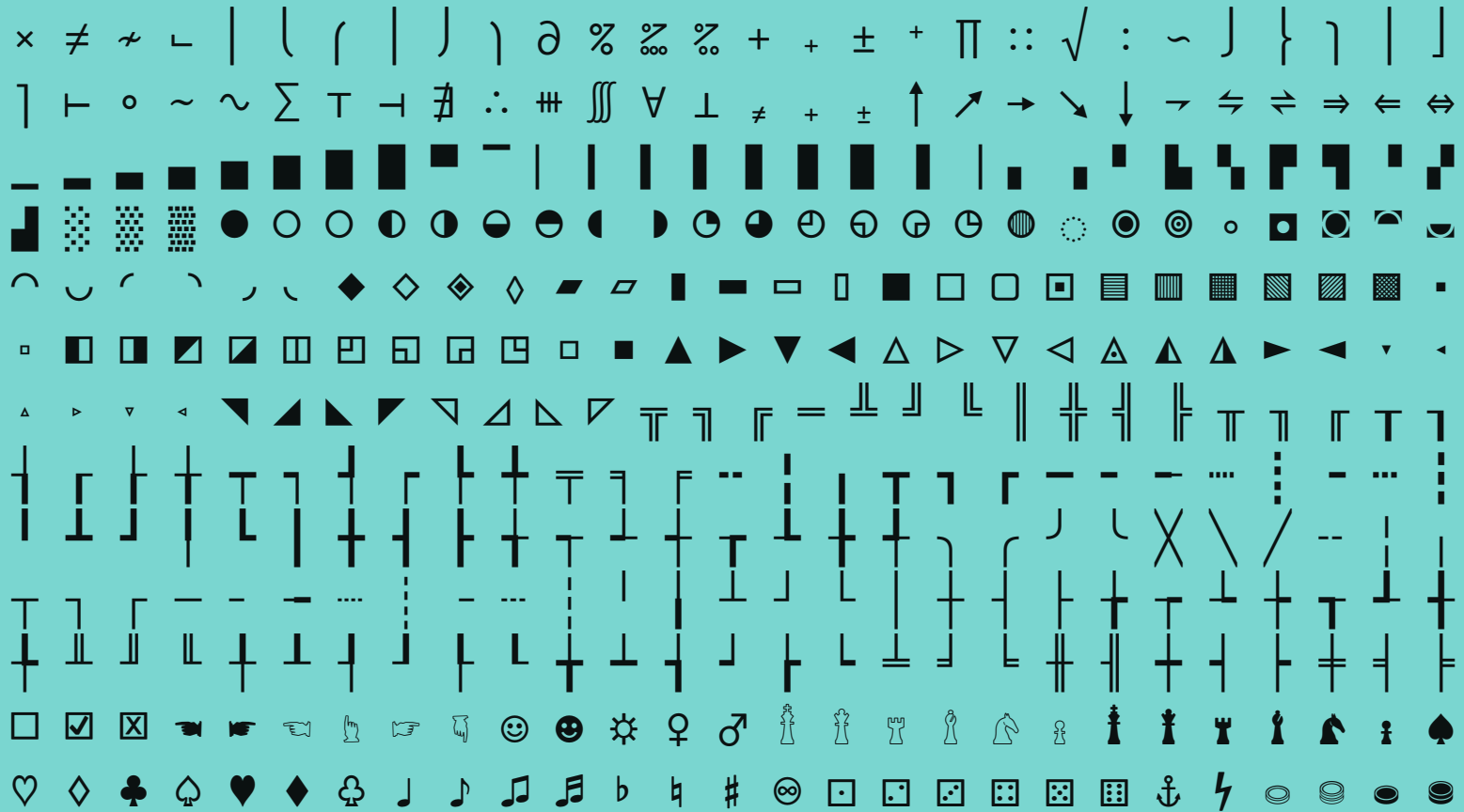
Kala Lagaw Ya, Kalaallisut, Kalenjin, Kalmyk, Kamba (Kenya), Kanuri, Kaonde, Kaqchikel, Kara-Kalpak, Karachay-Balkar, Karaim, Karata, Karelian, Kashubian, Kazakh, Kekchí, Kenzi (Mattokki), Khasi, Khinalugh, Kikuyu, Kimbundu, Kinyarwanda, Kirghiz, Kirmanjki, Kituba (DRC), Komi-Permyak, Kongo, Konzo, Krymchak, Kumyk, Kven Finnish, Ladin, Ladino, Lak, Latgalian, Lezghian, Lithuanian, Lombard, Low German, Lower Sorbian, Lozi, Luba-Lulua, Lule Sami, Luo (Kenya and Tanzania), Luxembourgish, Mískito, Macedo-Romanian, Macedonian, Madurese, Makonde, Malagasy, Malaysian, Maltese, Mandinka, Mandjak, Mankanya, Manx, Maore Comorian, Maori, Mapudungun, Marshallese, Matsés, Mauritian Creole, Megleno Romanian, Meriam Mir, Meru, Mezquital Otomi, Minangkabau, Mirandese, Mizo, Mohawk, Moksha, Mongolian Buriat, Montenegrin, Montenegrin, Munsee, Murrinh-Patha, Muslim Tat, Muslim Tat, Mwani, Naga Pidgin, Navajo, Ndonga, Neapolitan, Ngazidja Comorian, Niuean, Nobiin, Nogai, Nomatsiguenga, North Azerbaijani, North Marquesan, North Ndebele, Northern Kurdish, Northern Kurdish, Northern Qiandong Miao, Northern Sami, Northern Uzbek, Norwegian, Nyanja, Nyankole, Occitan, Ojtlán Chinantec, Orma, Oroqen, Ossetian, Otuho, Páez, Palauan, Pampang, Papantla Totonac, Papiamentu, Paraguayan Guaraní, Pedi, Picard, Pichis Ashéninka, Piemontese, Pijin, Pintupi-Luritja, Pipil, Pite Sami, Pohnpeian, Polish, Pontic Greek, Pontic Greek, Portuguese, Potawatomi, Purepecha, Quechua, Romanian, Romansh, Rotokas, Rundi, Russian Buriat, Rusyn, Rutul, Samoan, Sango, Sangu (Tanzania), Saramaccan, Sardinian, Scots, Scottish

LANGUAGE SUPPORT

Gaelic, Secoya, Sena, Serbian, Serbian, Seri, Seselwa Creole
 French, Shawnee, Shipibo-Conibo, Shona, Shor, Shuar, Shughni,
 Sicilian, Silesian, Slovak, Slovenian, Soga, Somali, Soninke, South
 Azerbaijani, South Marquesan, South Ndebele, Southern Altai,
 Southern Aymara, Southern Qiandong Miao, Southern Sami,
 Southern Sotho, Spanish, Squamish, Sranan Tongo, Standard
 Estonian, Standard Latvian, Standard Malay, Sundanese, Swahili,
 Swedish, Swiss German, Tabassaran, Tagalog, Tahitian, Tajik,
 Talysh, Tatar, Tedim Chin, Tetum, Tetun Dili, Tlingit, Toba, Tok Pisin,
 Tokelau, Tonga (Tonga Islands), Tonga (Zambia), Tosk Albanian,
 Tsakhur, Tsakhur, Tumbuka, Turkish, Turkmen, Tuvalu, Tuvinian,
 Tzeltal, Tzotzil, Uab Meto, Ukrainian, Umbundu, Ume Sami, Upper
 Guinea Crioulo, Upper Sorbian, Urum, Vöro, Venda, Venetian,
 Veps, Vietnamese, Vlax Romani, Wallisian, Walloon, Walser, Waray
 (Philippines), Warlpiri, Wayuu, Welsh, West Central Oromo,
 Western Abnaki, Western Frisian, Western Mari, Wiradjuri, Wolof,
 Xhosa, Yagnobi, Yakut, Yanesha', Yao, Yiddish (Eastern), Yiddish
 (Western), Yoruba, Yucateco, Záparo, Zapotec, Zulu, Zuni

GLYPHS

18PT 1403 VINTAGE MONO PRO REGULAR





DELVE FONTS

EMAIL:
support@delfonts.com

PHONE:
1.510.883.3358

MAILING ADDRESS:
Delve Fonts LLC
2717 Santa Clara Ave.
Alameda, CA 94501

1403 Vintage Mono is a trademark of Jeff Kellem.
Tome, and Delve Fonts are trademarks of Delve Fonts LLC.
All other trademarks or copyrights mentioned are the
property of their respective owners.

Copyright © 2025, Delve Fonts LLC. All Rights Reserved.